

GAOKEview Infrared Wall-mounted Digital Signage—Android Version T982

Product Features



- The whole machine adopts an industrial-grade design concept. The body is beautiful, thin and easy to install. It adopts a convection cooling scheme internally, which has good heat dissipation effect and can operate stably for a long time without interruption.
- 4mm physically tempered glass on the front, with high hardness and high safety protection factor; the frame is made of aluminum profiles with fine frosting process; the body is made of metal galvanized sheet, and the metal spraying process is used to prevent rust and paint stripping.
- Using a high-grade new 16:9 high-definition LCD display, it has high brightness, good colors, and delicate pictures. It supports up to 2160P audio and video decoding and playback, and can achieve high-quality picture output display.
- Adopting a high-precision infrared touch solution, it has accurate touch, smooth writing, stable operation, and good anti-interference performance; it supports multi-point touch to meet the different touch needs of users.
- Equipped with a smart Android operating system, it is easy to operate, powerful, and runs smoothly without lag; it is pre-installed with information publishing software; it has open ROOT permissions and can install client third-party software.
- It has a wide range of application scenarios, adapts to diversified installation environments, and supports various installation methods such as wall-mounted and embedded in horizontal and vertical directions; it is a multi-purpose intelligent high-end display device.

Display Parameter									
Screen level	Brand new A+ brand LCD screen								
Size	32inch	43inch	50inch	55inch	65inch	75inch	85inch	86inch	98inch
Backlight Type	E-LED	E-LED	E-LED	E-LED	E-LED	D-LED	D-LED	D-LED	D-LED
Resolution	1920x1080	1920x1080	1920x1080	3840x2160	3840x2160	3840x2160	3840x2160	3840x2160	3840x2160
Aspect ratio	16:9	16:9	16:9	16:9	16:9	16:9	16:9	16:9	16:9
Brightness	≥350cd/m2	≥350cd/m2	≥350cd/m2	≥350cd/m2	≥350cd/m2	≥350cd/m2	≥350cd/m2	≥350cd/m2	≥350cd/m2
Response Time	8.5ms (typ.)	8.5ms (typ.)	8.5ms (typ.)	8.5ms (typ.)	8.5ms (typ.)	8.5ms (typ.)	8.5ms (typ.)	8.5ms (typ.)	8.5ms (typ.)
Refreshing Frequency	60Hz	60Hz	60Hz	60Hz	60Hz	60Hz	60Hz	60Hz	60Hz
Viewing Angle	178°(H) / 178°(V)	178°(H) / 178°(V)	178°(H) / 178°(V)	178°(H) / 178°(V)	178°(H) / 178°(V)	178°(H) / 178°(V)	178°(H) / 178°(V)	178°(H) / 178°(V)	178°(H) / 178°(V)
View Area (mm)	718.4(H)x41 4.8(V)	960.5(H)x54 9.3(V)	1115.8(H)x6 36.4(V)	1209.51(H)x 700.4(V)	1428(H)x803 (V)	1651.36(H)x 931.96(V)	1873.56(H)x 1046.62(V)	1897.56(H)x 1070.62(V)	2158.1(H)x1 213(V)
Pixel layout	RGB vertical strip								
Contract Ratio	3000:1 (32inch 43inch 50inch 55inch 65inch) 6000:1(75inch) 5000:1(85inch 86inch)								
Display Colors	1.07B (8-bit + Hi-FRC)								

Touch Parameter	
Touch Type	Infrared Touch Technology
Touch surface	Tempered glass
Touch resolution	32768x32768
Touch points	Supports up to 10 touch points
Response Time	Single point mode: click 4ms, continuous 2ms
	Multi-points mode: click 5ms, continuous 3ms
Touch Accuracy	≤2mm
Input Mode	Finger or Pen
Output method	Coordinate
Anti-light performance	Incandescent lamp (220V,100W), the vertical distance of 350mm above the sunlight illumination up to 90000Lux
Drive mode	USB free drive
Calibration method	Special software

Structure Parameter									
Size	32inch	43inch	50inch	55inch	65inch	75inch	85inch	86inch	98inch
Body color	Black or silver(32inch 43inch 50inch 55inch 65inch Optional)								
Surface Material	4mm explosion-proof tempered glass (physical tempering process)								
Border material	Aluminum profile (frosted process)								
Body material	Metal back plate (spraying process)								
Packaging material	Gravity carton								
Product dimensions(m m)	738.4*434.8*71.8mm	980.5*569.3*71.8mm	1135.8*656.4*78mm	1249.51*720.4*77.11	1468.5*843.5*77mm	1705.36*985.96*83mm	1951.56*1124.62*83mm	1951.56*1124.62*83mm	2158.9*1272.5*149.1mm
Package Size(mm)	863*157*587mm	1106*157*721mm	1261*157*808mm	1375*165*870mm	1560*170*995mm	1830*225*1130mm	2095*235*1270mm	2095*235*1270mm	2430*265*1500mm
N.W/G.W	10KG/13KG	15KG/18.6KG	22KG/26.4KG	25KG/30.2KG	34KG/39.5KG	40KG/52KG	50KG/61.5KG	50KG/61.5KG	95KG/105.6KG
Wall mount bracket	Standard horizontal/vertical universal split wall mount								
Installation method	Support wall-mounted/embedded/mobile bracket/base installation								

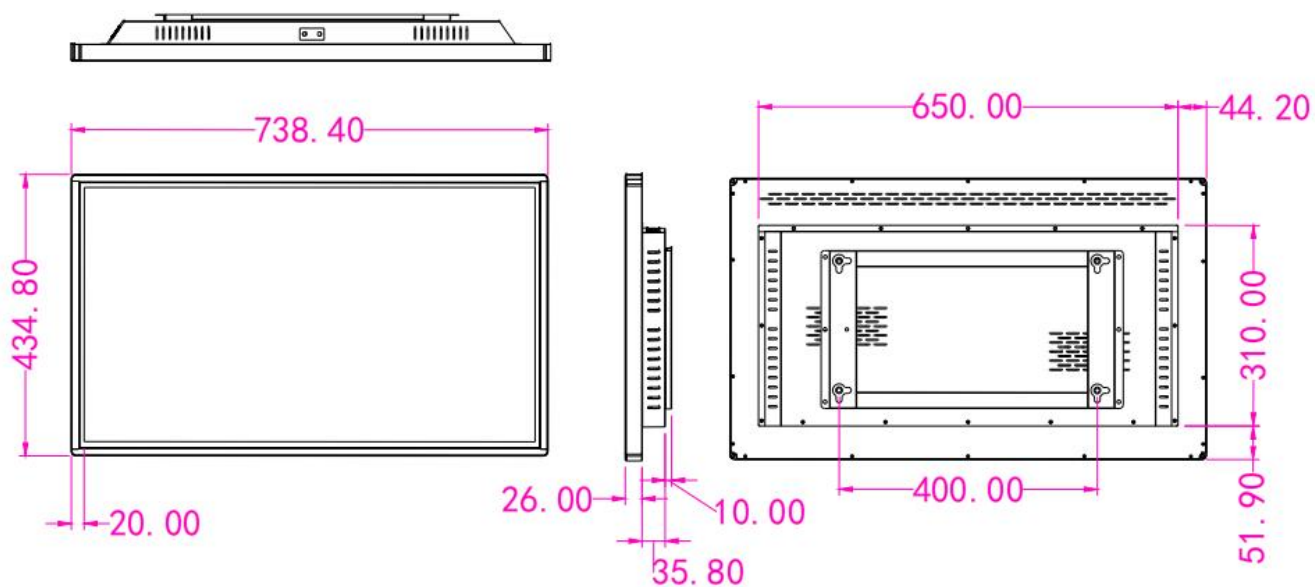
System Configuration	
Operating System	Android
CPU	T982 Quad-core Cortex-A55 Max 1.9GHz
GPU	Mali -G52
RAM	4GB
ROM	32GB
Android Version	Android 14
Input interfaces	USB3.0 *1, USB OTG*1, TF Slot*1,LAN*1,DC-12V-IN HDMI*1
Audio Interface	3.5mm dual-channel audio interface*1
Network	Supports RJ45 R/A 100Mbps Ethernet; 2.4GHz + 5GHz dual-band Wi-Fi 6; Supports Wi-Fi 802.11 a/b/g/n/ac/ax protocols; Bluetooth 5.3; Supports external 4G and 5G modules.

System functions	
Software support	Supporting installation of third-party application software
WIFI-Hotspot	Support WIFI-Hotspot
Start-up method	Power on start
System Authority	Open the root privileges for customized product development
Remote monitoring	Real-time remote monitoring, self-recovery from system crashes, 24/7 unattended operation.
Play mode	Supports switching between server and standalone modes.
Language	Support Chinese, Traditional Chinese, English and other languages
Memory expansion	Support up to 256G TF card expansion
Customization	Customizable boot LOGO
Audio function	2-channel output (8 Ω /5W dual audio amplifier output)
Screen rotation	Supports manual rotation at 0° , 90° , 180° , and 270° , and supports automatic rotation via an external gravity sensor module.
Mouse and Keyboard Functions	Standard Android keyboard, third-party input methods(optional)
USB function	Updating/Playing Media Files/External Devices

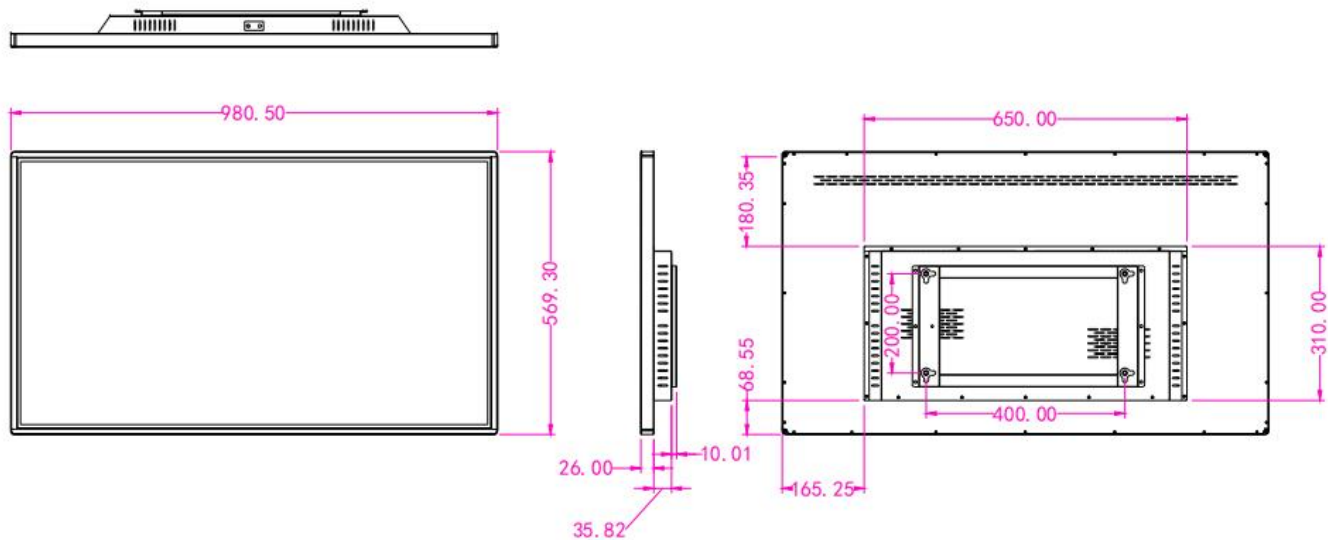
Electrical Performance	
Applicable scene	Indoor Installation and using
Rated voltage	AC110-220V
Standby power	$\leq 1W$
Rated power	32" $\leq 50W$ 43" $\leq 60W$ 50" $\leq 90W$ 55" $\leq 140W$ 65" $\leq 140W$ 75" $\leq 380W$ 85" $\leq 420W$ 86" $\leq 420W$ 98" $\leq 450W$
Working environment	Temperature 0℃~55℃/humidity 10%RH~90%RH
Storage environment	Temperature - 5℃~60℃/humidity 10%RH~90%RH
Life time	>80000 hours
Notes	Please do not use it in an environment exposed to rain, moisture, oil, or direct sunlight to avoid equipment damage.

Packing List	
Machine	x1
Wall-mounted bracket	x1
Power cord	x1
Remote control	x1
WiFi antenna	x1
Warranty card/Certificate of qualification	x1

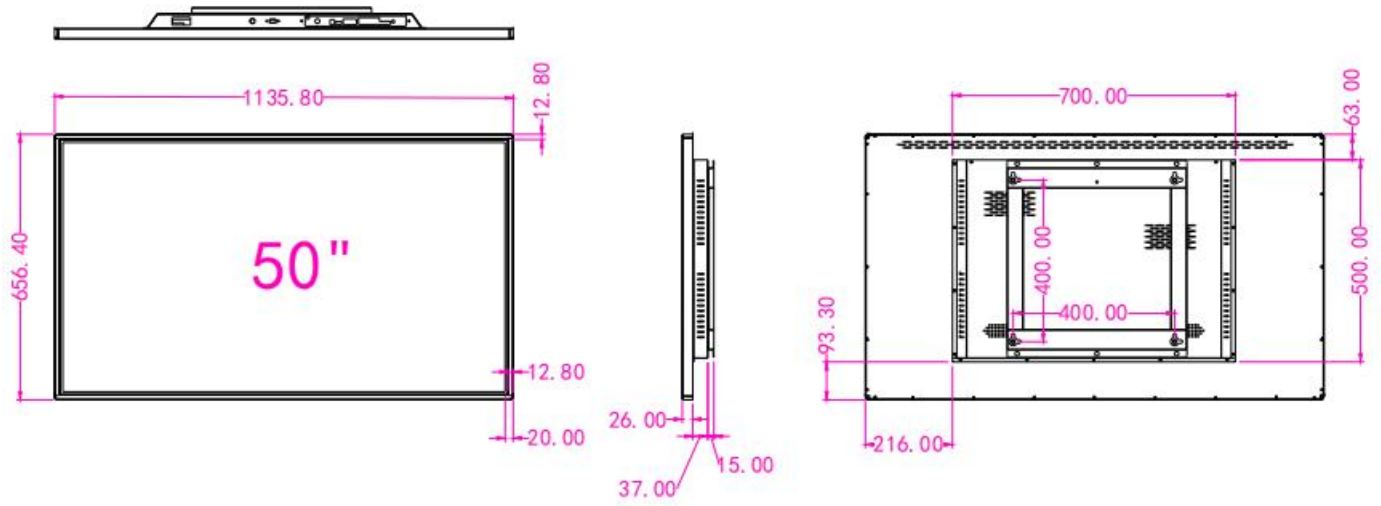
Product View-32inch



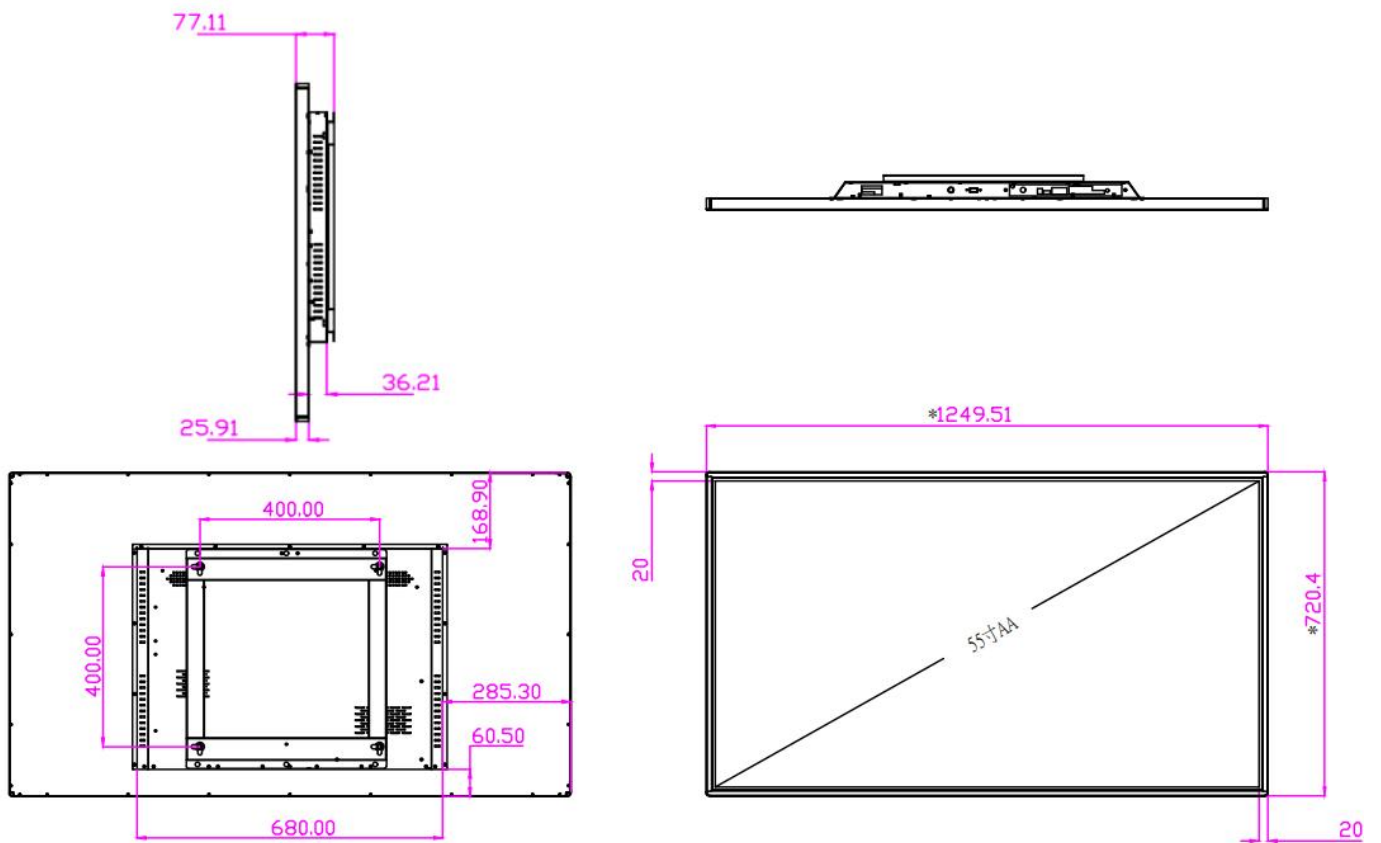
Product View-43inch



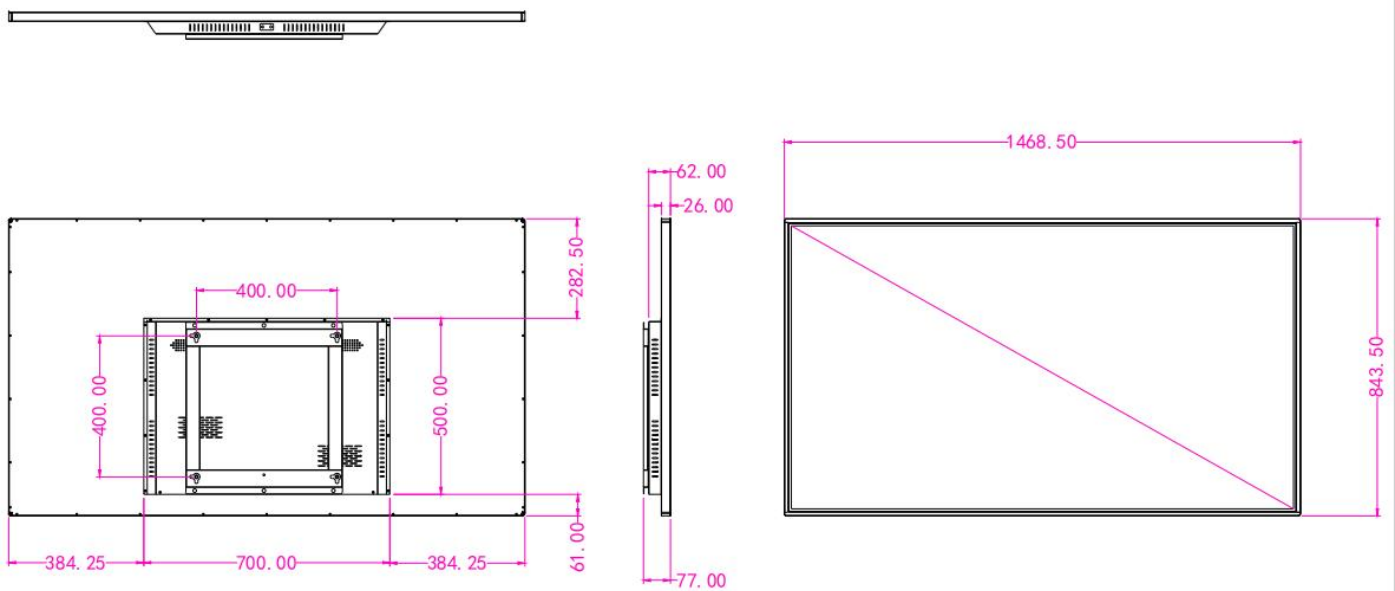
Product View-50inch



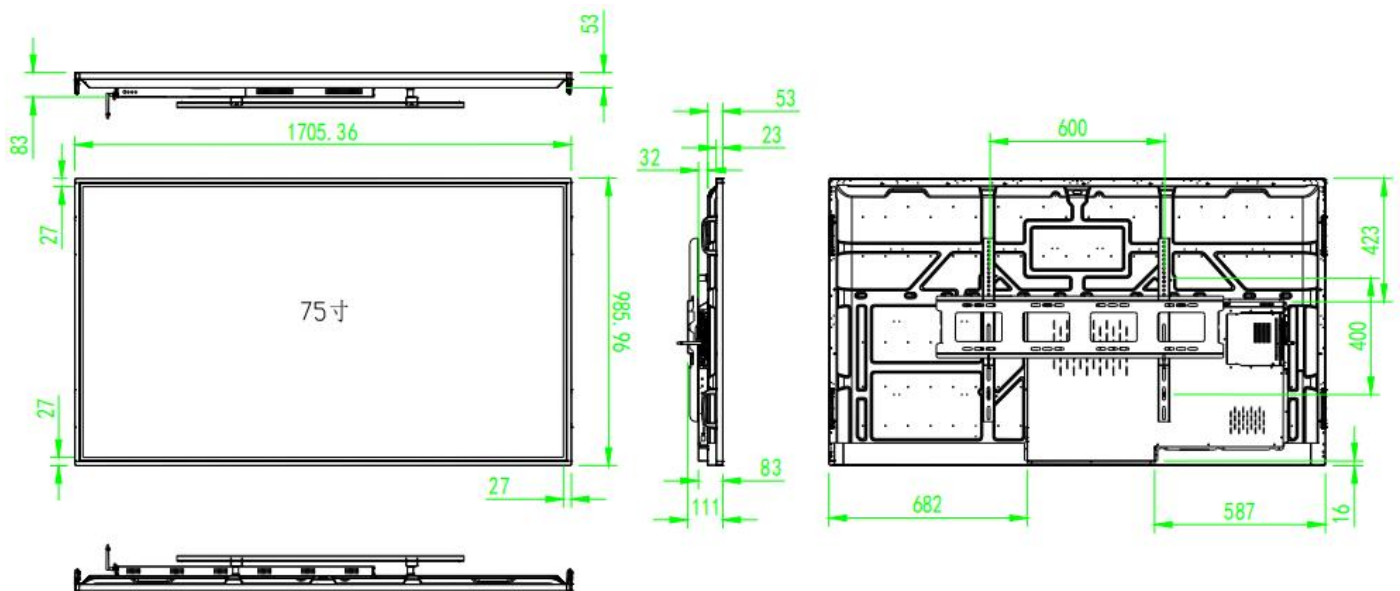
Product View-55inch



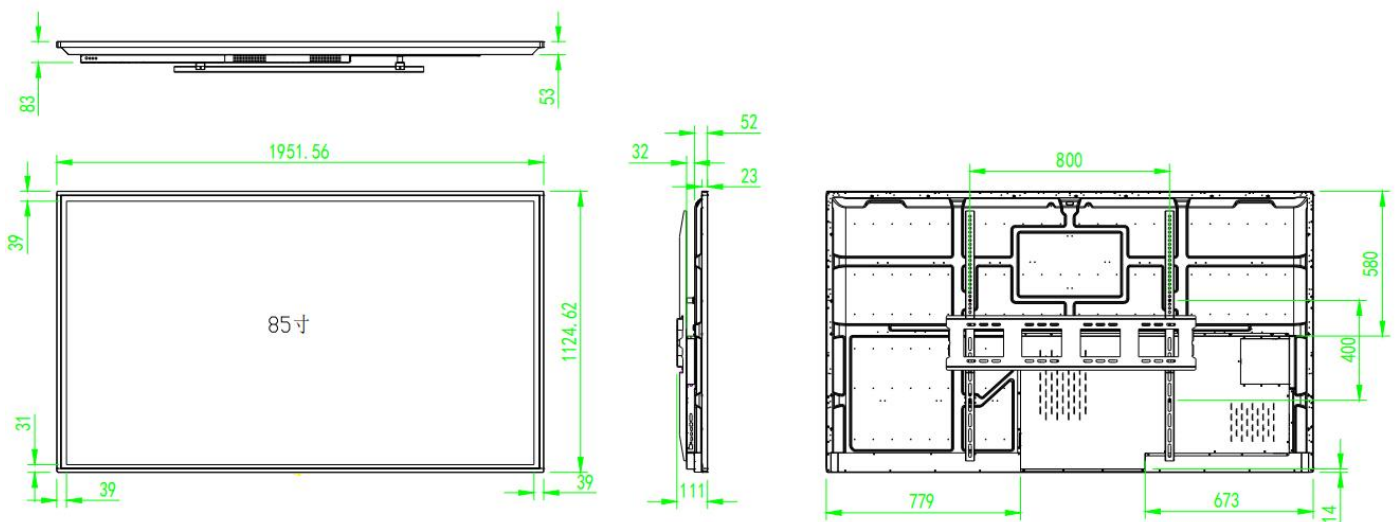
Product View-65inch



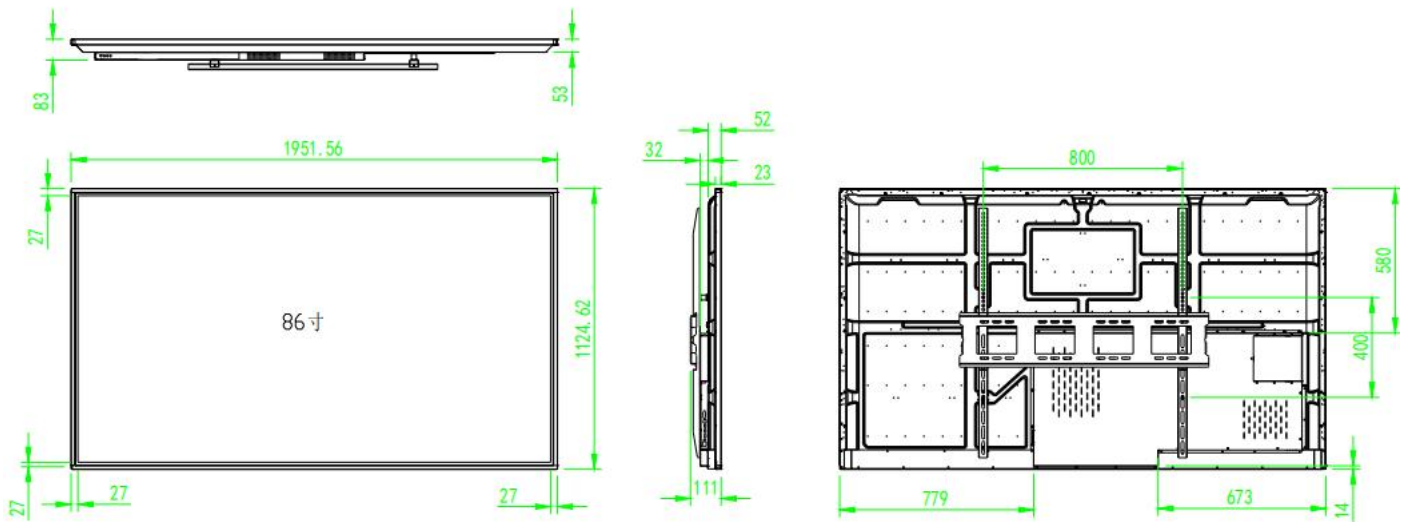
Product View-75inch



Product View-85inch



Product View-86inch



Product View-98inch

